

NTRsupport CRM Integration Package



Integrate NTRsupport in your CRM and optimise the flow of the things you know!

The NTRsupport CRM Integration Package is a tool designed for companies that want to optimise the flow of information between their remote support solution and the CRM. A large collection of libraries allows a total interaction between NTRsupport and the leading CRM systems in the market, ensuring the rapid flow of data.

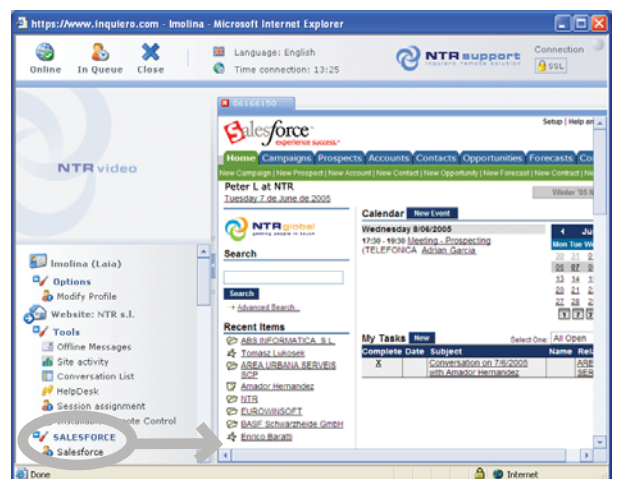
With a simple NTRsupport integration, you can manage your CRM's data and save customer chats and events. The information flows both ways, optimising the benefits of NTRsupport and your CRM tool. NTRsupport libraries launch the CRM tool in an embedded form and your operators avoid working with two applications at the same time. Integrate NTRsupport and know the flow!

Benefits for Your Business

- Improve customer service by knowing who your clients are
- Review customer history and diagnose incidents
- Easily follow-up on incidents
- Operators save time when using only one integrated solution
- Integrate NTRsupport to existing CRMs in the market
- Reduce integration time

Key Features

- Customised menus
- New options in the Operator chat tools
- Automatic or Manual CRM login
- Embedded CRM
- Allows Operators to obtain customer data automatically when starting a chat
- Enter chat conversations and events in your CRM's customer record
- Already implemented to existing CRMs in the market



Automatically open customer records

